

Akzento AB

1/10" twist drukowany

100% polyamide IMPREL®

heatset

PODKŁAD

Action Back

WYSOKOŚĆ RUNA

± 5.5 mm

WYSOKOŚĆ CAŁKOWITA

±7.5 mm

WAGA RUNA

± 860 g/m²

WAGA CAŁKOWITA

± 1.920 g/m²

ILOŚĆ PUNKTÓW /M²

± 161 500

UŻYTKOWANIE

- Klasa 31
- Komfort: 2**
- Schody domowe
- Klasa palności
Cfl-s1 EN 13501-1

1/10" Frisé imprimé

100% polyamide IMPREL®

thermofixé

DOSSIER

Action Back

HAUTEUR DU VELOURS

± 5.5 mm

HAUTEUR TOTALE

±7.5 mm

POIDS DU VELOURS

± 860 g/m²

POIDS TOTAL

± 1.920 g/m²

NOMBRE DE POINTS/M²

± 161 500

UTILISATION

- Classe 31
- Confort: 2**
- Escaliers (Habit.)
- Classement feu Cfl-s1 EN 13501-1
- Résistance thermique:
ISO 8302: 0.16 m² K/W

1/10" Frisé bedrukt

100% Polyamid IMPREL®

thermofixiert

RÜCKEN

Action Back

POLHÖHE

± 5.5 mm

GESAMTHÖHE

±7.5 mm

POLGEWICHT

± 860 g/m²

GESAMTGEWICHT

± 1.920 g/m²

NOPPEN/M²

± 161 500

EINSATZ

- Klasse 31: stark
- Komfort: 2**
- Treppengeeignet (W)
- Baustoffkl. Cfl-s1 EN13501-1
- Wdw. ISO 8302: 0.16 m² K

1/10" twist pile printed

100% nylon IMPREL®

heatset

BACKING

Action Back

PILE HEIGHT

± 5.5 mm

TOTAL HEIGHT

±7.5 mm

PILE WEIGHT

± 860 g/m²

TOTAL WEIGHT

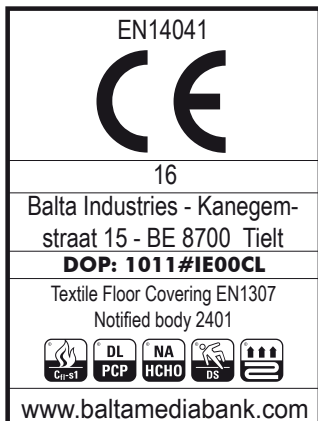
± 1.920 g/m²

TUFT DENSITY/M²

± 161 500

USAGE

- Class 31
- Komfort: 2**
- Stairs domestic
- Fire resist. Cfl-s1 EN13501-1



Onder voorbehoud van wijzingen van de technische specificaties - Sous réserve de modifications techniques - Unter Vorbehalt von technischen Änderungen - All rights reserved to alter technical specification

Akzento ↔5.2cm ↕5.2cm	10	22	35	44	65	77	93	94	98
CA. 4M	●	●	●	●	●	●	●	●	●

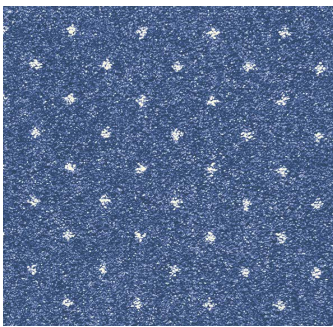


Balta Industries _ Kanegemstraat 15 _ B-8700 Tielt TEL. +32 51 42 44 11 www.baltagroup.com

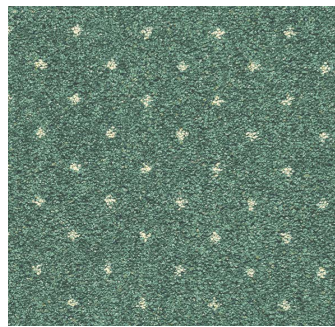
Akzento AB



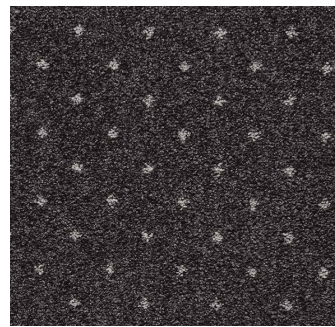
400 cm 35



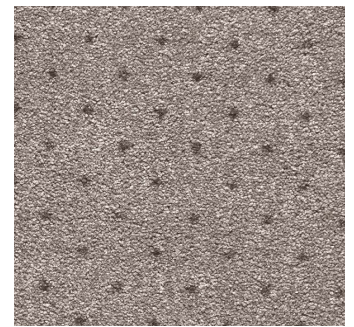
400 cm 77



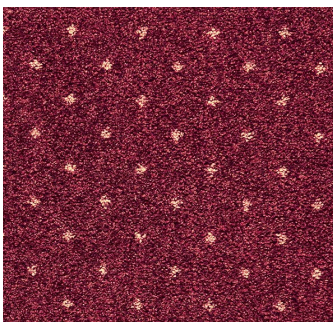
400 cm 22



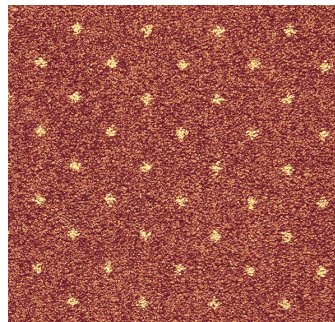
400 cm 98



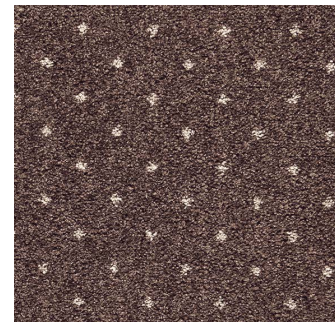
400 cm 93



400 cm 10



400 cm 65



400 cm 44



400 cm 94